



Setup Guide

FicheFinder EPC – ARKONA Integration
November 2004

FicheFinder EPC – ARKONA Integration

ARKONA Setup Guide

Use this Setup Guide for help setting up the FicheFinder EPC software to integrate with the ARKONA DMS.

1. Order the Fiche Finder software from Lightspeed.

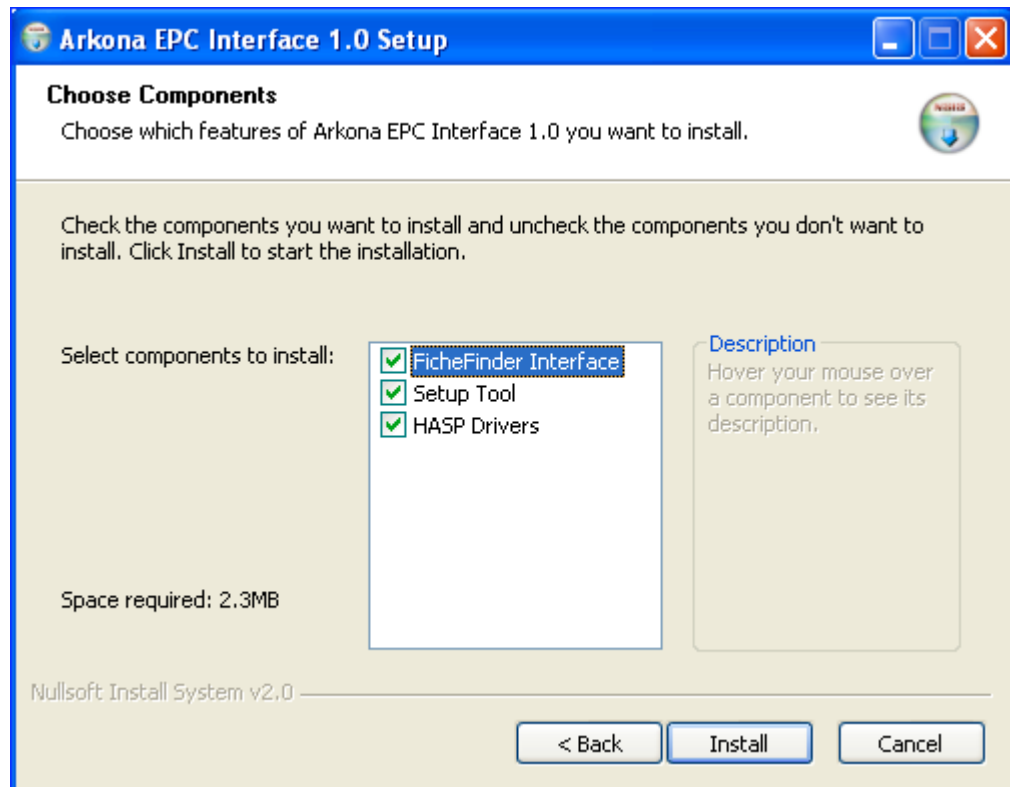
- This step should be accomplished several days prior to the planned installation date.
- a. Contact Lightspeed at 800-521-0309.
 - Provide the dealership location and dealer number to Lightspeed.
- b. Complete the paperwork from Lightspeed to obtain the software.

2. Establish communications between the dealership and the ARKONA web server.

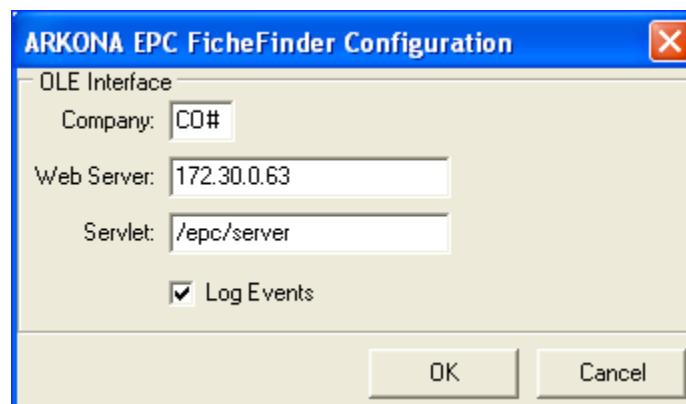
- a. Have a communications route added to the ARKONA web server.
 - Provide the IP scheme of the dealership to the ARKONA Engineering Department so they can add the route for FicheFinder communications.
- b. Test the communications.
 - Ping 172.30.0.63 from a dealership pc to verify the route has been added successfully.

3. Install the ARKONA EPC software.

- a. Download the EPC software from the ARKONA ftp site <ftp://ftp.arkona.com>.
 1. Right click on the EPC folder and click Copy to Folder.
 2. Browse to the Desktop folder and click OK to copy the EPC folder to the pc desktop.
 3. Double-click the EPC folder on the desktop and double-click the setup.zip icon and unzip the .exe file.
 4. Double-click the unzipped setup_epc.exe file and follow the default installation instructions making sure the correct components are selected to install.



5. Key in the Company, Web Server IP, and Servlet name and check the Log Events box as shown.
 - Enter the ARKONA company number (e.g. R02).



6. Follow the defaults to finish the installation process.

4. Install FicheFinder.

- a. FicheFinder comes with an install disk, catalog disk, and the specified number of security HASPs.
- b. Attach a HASP to LPT1 of the computer that will have FicheFinder loaded on it.
 - You may have to reboot the computer to get it to recognize the HASP.
- c. Load the install disk and it should start the install process automatically.
 - Load the catalog disk when prompted.
- d. Locate the FicheFinder preferences and manuals.
 - In Programs/Bell & Howell/Speed Enhancer, there are options for customizing FicheFinder.
 - There are user manuals (PDF's) the dealership might want to print so they better understand how the catalog works.

5. Use FicheFinder with ARKONA.

- a. Open a session in ARKONA and get into the Parts Transactions screen.
- b. Start the ARKONA EPC Interface.
 - Double-click the icon on the desktop to start the program running in the system tray.
- c. On the parts catalogue, locate the unit you want to find parts for.
- d. Click on a part
 - The on hand quantity from ARKONA will be displayed with the part at the bottom.
 - Click on additional parts if needed.
- e. Hit F4 in the parts catalogue to move the parts selected from FicheFinder into an ARKONA file on the pc.
 - This will clear the parts selection area in FicheFinder and send the parts to a file in ARKONA.
- f. Hit **F9=Accept Catalog** on the Parts Transactions screen to put parts on the screen.
 - If a part has an on hand quantity < 1, the Quantity Not Available screen will appear for each part without quantity available.